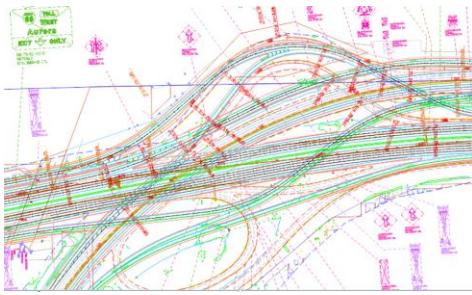


About RGE – Design

RGE is a leading diversity-supplier that provides quality construction management and design services to our partners. By playing a key role in our partners’ teams, RGE has managed the design and construction of infrastructure and utility projects. At RGE, we value working safely. We deliver projects for our partners by focusing on the details, being open and willing to do the work while maintaining the highest integrity.



WHY RGE?

- **Core Values:** Do it Safe & Right, Open & Willing, Powerful Communicators, Have Fun!
- **Licensed Staff:** 40% of Staff are Licensed Professional Engineers
- **Capacity** to handle projects with construction value totaling over \$500 million
- **Expertise** built on over 70 major infrastructure projects successfully completed

SOFTWARE

- Power GEOPAK V8i
- Microstation V8i (SS4)
- Bluebeam Revu
- Guidesigns 7.0



PROJECT NAME

I-294 Central Tri-State Design Corridor Manager (DCM)

PARTNER

AECOM

CLIENT

Illinois Tollway

WORK PERFORMED

Conceptual & Preliminary Highway Design

DESCRIPTION

A variety of design-related tasks as part of AECOM’s Design Corridor Manager Team for the I-294 Central Tri-State corridor from 95th St to Balmoral Ave. These corridor-wide tasks include preliminary, pre-final and final constructability reviews, concept verification pertaining to signing and pavement markings. Design and layout of proposed guide and information signing utilizing Microstation and GuideSigns 7.0 software.

PROJECT NAME

Over Pressure Protection Delivery Stations

PARTNER

Universal Pegasus Intl.

CLIENT

Ameren Illinois

WORK PERFORMED

Survey, Utility Design and Coordination

DESCRIPTION

Our role as CAD designers included preliminary, pre-final and final design of the assigned OPP natural gas delivery stations. RGE assured CAD drawings adhered to Ameren Illinois’ current standards. RGE processed GPS & Point Cloud survey data in Microstation for UPI Designers to develop base sheet models.

PROJECT NAME

British Petroleum – MOT Plans for Various Loc.

RGE PRIME

CLIENT

United Piping Inc.

WORK PERFORMED

Traffic Control and Detour Plans

DESCRIPTION

Took on responsibilities of design manager including the coordination of work between the utility contractor and local agencies and CADD of plans according to federal, state, and local standards. Projects have included developing traffic control and full closure detour plans for various utility sites located in Cook and Will counties.

PROJECT NAME

RR-10-9973 Consultant Engineering Services

PARTNER

AECOM

CLIENT

Illinois Tollway

WORK PERFORMED

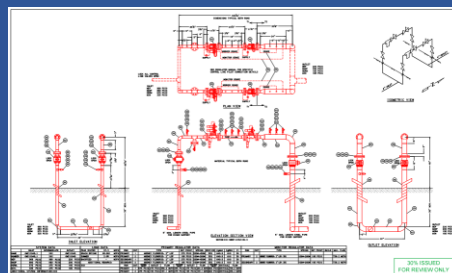
Bridge Defect Calculations Bridge Inspection & Misc. Highway Special Inspections

DESCRIPTION

Worked with AECOM on Phase 1 and Phase 2 deficiency design calculations used to perform element and routine bridge inspection. Work includes the required deficiency documentation, rating and calculations using bridge inspection forms following the Pontis Format.

CONTACT INFORMATION

RGE
2150 S. Canalport Ave., Suite 4A-1
Chicago, IL 60608
Office: (312) 291-9106
Fax: (312) 291-9079
www.rgengineering.net



CERTIFICATIONS

MBE Certified (City of Chicago)
DBE Certified (State of Illinois)
DBE Certified (State of Indiana)
DBE Certified (State of Wisconsin)
DBE Certified (State of Maryland)
MSDC (State of Illinois)
LEED BD+C Consultants