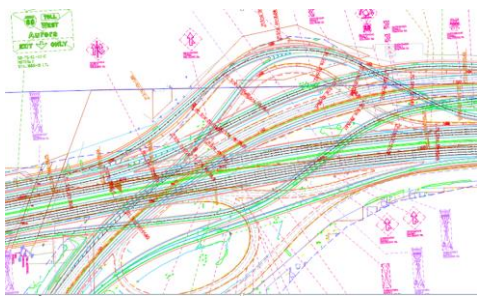


About Reach Grow Exceed Engineering – Design

Reach Grow Exceed Engineering (RGE) is a leading diversity-supplier that provides quality construction management and design services to our partners. By playing a key role in our partners' teams, RGE has managed the design and construction of infrastructure and utility projects. At RGE, we value working safely. We deliver projects for our partners by focusing on the details, being open and willing to do the work while maintaining the highest integrity.



WHY RGE?

- **Core Values:** Do it Safe & Right, Open & Willing, Powerful Communicators, Have Fun!
- **Licensed Staff:** 30% of Staff are Licensed Professional Engineers
- **Capacity** to handle projects with construction value totaling over \$500 million
- **Expertise** formed and built on over 100 major infrastructure projects successfully completed

SOFTWARE

- Power GEOPAK V8i
- Microstation V8i (SS4)
- Bluebeam Revu
- Guidesigns 7.0



PROJECT NAME

I-294 Central Tri-State Design Corridor Manager (DCM)

PARTNER
AECOM

CLIENT
Illinois Tollway

WORK PERFORMED
Conceptual & Preliminary Highway Design

DESCRIPTION
Part of AECOM's Design Corridor Manager Team for the I-294 Central Tri-State corridor from 95th St to Balmoral Ave. Tasks include constructability reviews, concept verification pertaining to signing and pavement markings. Design and layout of proposed guide and information signing utilizing Guidesigns.

PROJECT NAME

Over Pressure Protection Delivery Stations

PARTNER
Universal Pegasus Intl.

CLIENT
Ameren Illinois

WORK PERFORMED
Survey, Utility Design and Coordination

DESCRIPTION
Our role as CAD designers included preliminary, pre-final and final design of the assigned OPP natural gas delivery stations. RGE assured CAD drawings adhered to Ameren Illinois' current standards. RGE also processed GPS & Point Cloud survey data in Microstation for UPI Designers to develop base sheet models.

PROJECT NAME

British Petroleum – MOT Plans for Various Locations

RGE PRIME

CLIENT
United Piping Inc.

WORK PERFORMED
Traffic Control and Detour Plans

DESCRIPTION
Design manager responsibilities including coordination of work between the utility contractor and local agencies and CADD of plans according to federal, state, and local standards. Projects have included developing traffic control and full closure detour plans for various utility sites located in Cook and Will counties.

PROJECT NAME

RR-10-9973 Consultant Engineering Services

PARTNER
AECOM

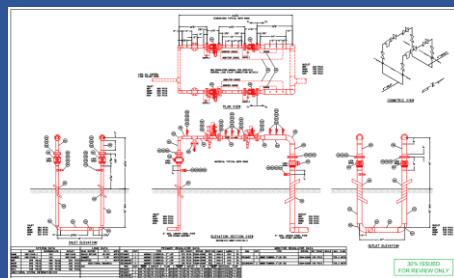
CLIENT
Illinois Tollway

WORK PERFORMED
Bridge Defect Calculations
Bridge Inspection & Misc.
Highway Special Inspections

DESCRIPTION
Assisted with Phase 1 and Phase 2 deficiency design calculations used to perform element and routine bridge inspection. Work included required deficiency documentation, rating and calculations using bridge inspection forms following the Pontis Format.

CONTACT INFORMATION

Reach Grow Exceed Engineering
3700 S Iron St 2nd Floor
Chicago, IL 60609
Office: (312) 291-9106
Fax: (312) 291-9079
www.rgeengineering.net



CERTIFICATIONS

MBE Certified (City of Chicago)
DBE Certified (State of Illinois)
DBE Certified (State of Indiana)
DBE Certified (State of Wisconsin)
DBE Certified (State of Maryland)
MSDC (State of Illinois)
LEED BD+C Consultants